



## SENTRY driver update



### Introduction

This procedure describes the steps required to install the new SENTRY driver when updating the software from version 2.02 to version 2.10. The driver will update automatically during the installation of the software v2.10. This procedure is an alternative in order to update the driver manually.

The new driver (provided with the software update) is compatible with all versions of Windows (XP, Vista and 7) and with both configurations (32-bit and 64-bit). Note that version 2.10 of the software will not work with the previous version of the driver.

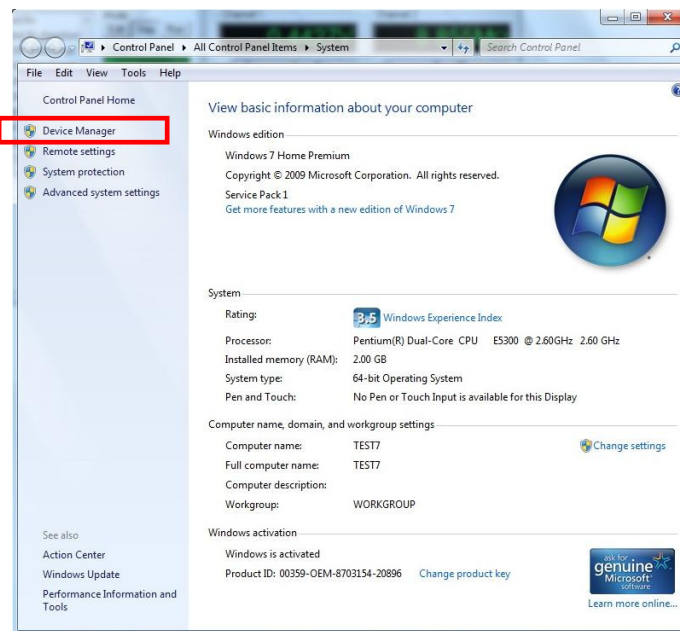
### Update procedure

Before updating the driver, make sure that the SENTRY unit is connected to the computer and that power is turned on. In Windows, open the device manager. With Windows XP, this can be done by clicking on **Start** and right clicking on **My Computer**. Select **Properties** from the menu and click on the **Hardware** tab. Finally, click on the **Device Manager** button.





With Windows Vista and XP, right click on **My Computer** and select **Properties**. The Device Manager is located in the left hand side menu.



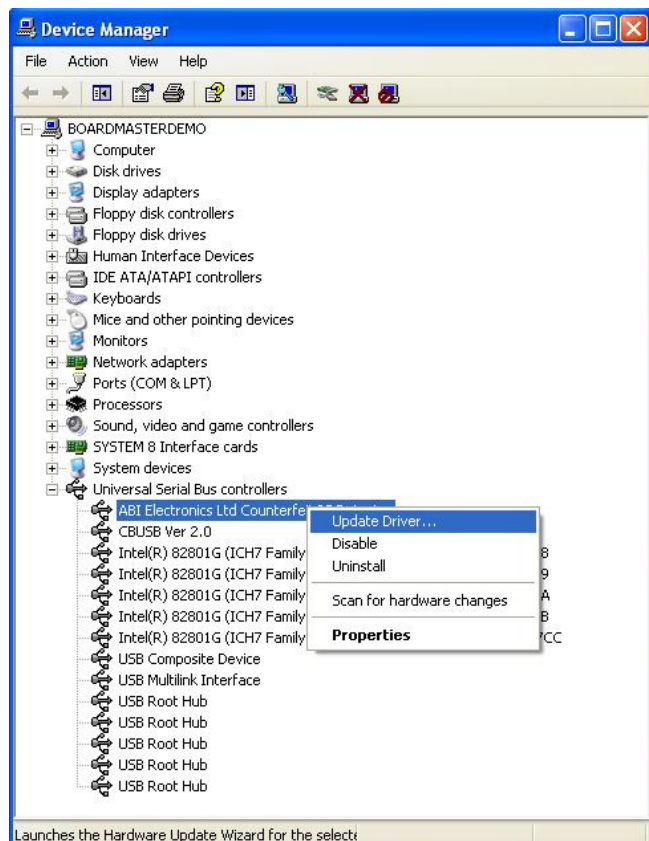
In the Device Manager, locate the instance *ABI Electronics Ltd Counterfeit IC Detector* under the *Universal Serial Bus controllers*.

If this instance is not listed, make sure that the USB cable is connected to your computer and that the SENTRY unit is turned on.

If it is the first time that SENTRY is being installed on this computer, the hardware will appear as *USB Device*.

If this instance is still not listed, select *Action>Scan for hardware changes* to refresh the list.

Right click on the instance and select **Update Driver**.





Select *No, not this time* in the *Found New Hardware Wizard* window.



Select the *Install from a list of specific location (Advanced)* option.



In the next window, select *Don't search. I will choose the driver to install.*

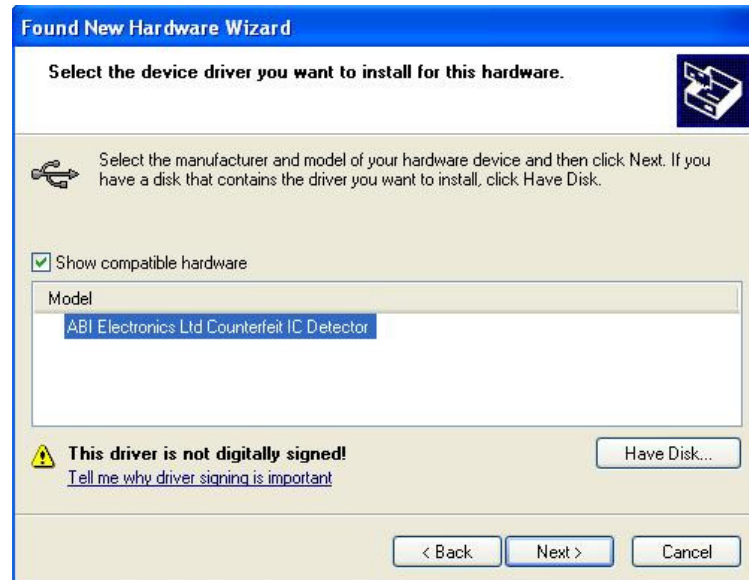




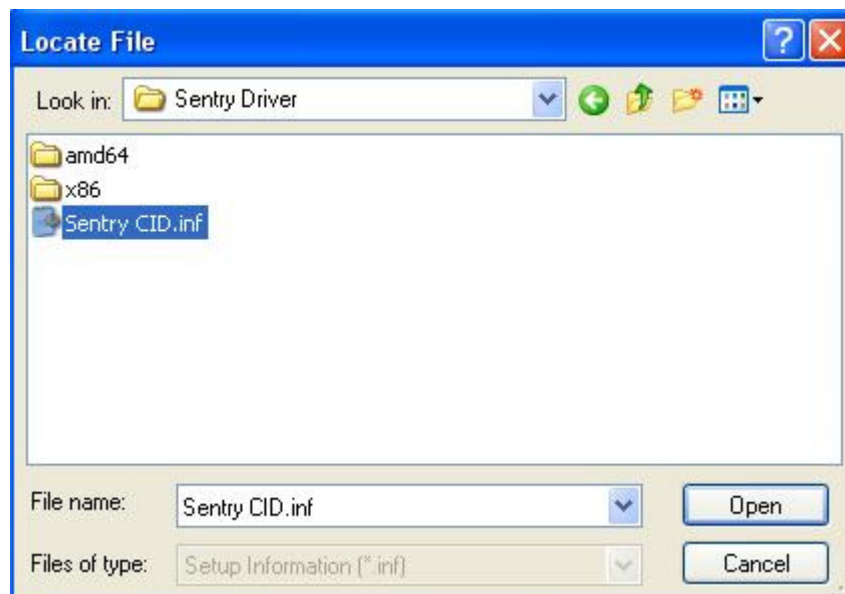


## ***Technical Procedure***

In the following window, click on the *Have Disk...* button and browse to the location of the SENTRY Driver folder provided in the zipped update file (if downloaded from the ABI Electronics website).



In the SENTRY Driver folder, select the file **SENTRY CID.inf** and click on *Open*. Then click on *Next*.



**Note:** If Windows does not pick up the appropriate driver automatically, users with INTEL processors need to browse to the x86 folder while users with AMD processors will need to browse to the AMD64 folder.



## ***Technical Procedure***

If Windows prompts that the Windows Logo test failed, click on *Continue Anyway*.



### **Complete update**

After a few moments, the installation should complete. Click on the *Finish* button.





## Software update

To install the latest version of the software, click on the Setup.exe file and follow the instructions on the screen. Once the software has started, click on the Hardware tab and check that 5 green ticks are displayed.

